

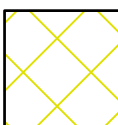
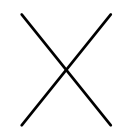
Q:\PA-CAMP-MC\WCM\Projects\EASTLAM1\311754-01-001 - Strasburg Pike Trail\dwg\Exhibits\CEE\754RDY01 - CEE.dwg, 12/13/2023 4:00 PM

DISTRICT	COUNTY	ROUTE	SECTION	SHEET	
8-0	LANCASTER	NA	NA	13 OF 22	
EAST LAMPETER TOWNSHIP					
REVISION NUMBER	REVISIONS			DATE	BY

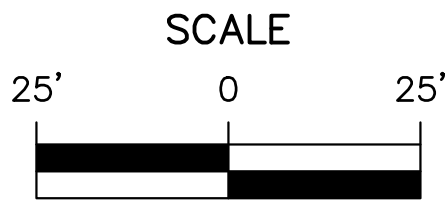


CONTINUED ON SHEET 14

LEGEND

-  PERVIOUS ASPHALT PATH
-  TREE REMOVAL

STRASBURG PIKE TRAIL



SEE SHEET 18 FOR PROFILE

ROADWAY
IMPROVEMENT PLAN

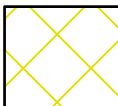
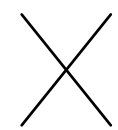
Q: \\PA-CAMP-MC\MCM\Projects\EASTLAMI\311754-01-001 - Strasburg Pike Trail\dwg\Exhibits\CEE\754RDY01 - CEE.dwg, 12/13/2023 4:00 PM

CONTINUED ON SHEET 13

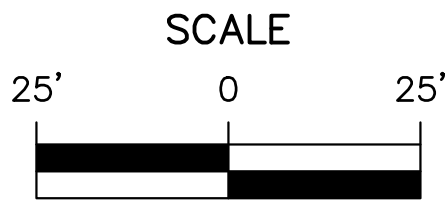
DISTRICT	COUNTY	ROUTE	SECTION	SHEET	
8-0	LANCASTER	NA	NA	14 OF 22	
EAST LAMPETER TOWNSHIP					
REVISION NUMBER	REVISIONS			DATE	BY



LEGEND

-  PERVIOUS ASPHALT PATH
-  TREE REMOVAL

STRASBURG PIKE TRAIL



SEE SHEET 19 FOR PROFILE

CONTINUED ON SHEET 15

ROADWAY
IMPROVEMENT PLAN

Q:\PA-CAMP-MC\MCM\Projects\EASTLAM1\311754-01-001 - Strasburg Pike Trail\dwg\Exhibits\CEE\754RDY01 - CEE.dwg, 12/13/2023 4:00 PM

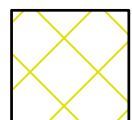

CONTINUED ON SHEET 14

DISTRICT	COUNTY	ROUTE	SECTION	SHEET	
8-0	LANCASTER	NA	NA	15 OF 22	
EAST LAMPETER TOWNSHIP					
REVISION NUMBER	REVISIONS			DATE	BY

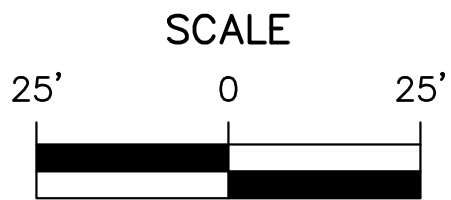
CONTINUED ON SHEET 16



LEGEND

-  PERVIOUS ASPHALT PATH
-  PAVEMENT RESTORATION

STRASBURG PIKE TRAIL



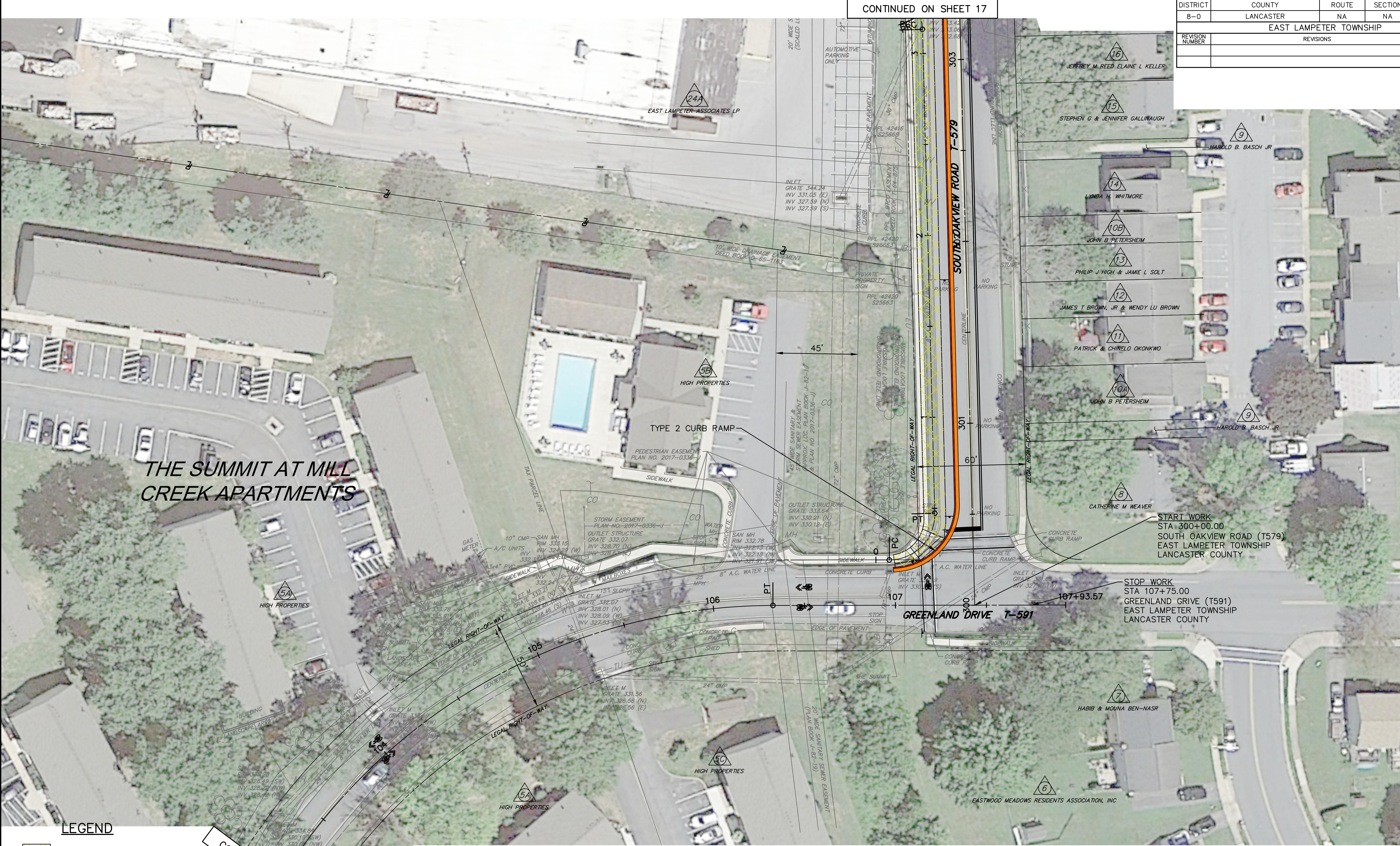
SEE SHEET 20-21 FOR PROFILE

ROADWAY
IMPROVEMENT PLAN

Q:\PA-CAMP-MC\WCM\Projects\EASTLAM1\311754-01-001 - Strasburg Pike Trail\dwg\Exhibits\CEE\754RDY01 - CEE.dwg, 12/13/2023 4:00 PM

CONTINUED ON SHEET 17

DISTRICT	COUNTY	ROUTE	SECTION	SHEET	
8-0	LANCASTER	NA	NA	16 OF 22	
EAST LAMPETER TOWNSHIP					
REVISION NUMBER	REVISIONS			DATE	BY



THE SUMMIT AT MILL CREEK APARTMENTS

TYPE 2 CURB RAMP

START WORK
STA 300+00.00
SOUTH OAKVIEW ROAD (T579)
EAST LAMPETER TOWNSHIP
LANCASTER COUNTY

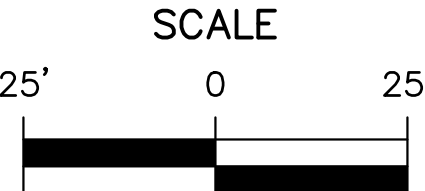
STOP WORK
STA 107+75.00
GREENLAND GRIVE (T591)
EAST LAMPETER TOWNSHIP
LANCASTER COUNTY

LEGEND

- PERVIOUS ASPHALT PATH
- PAVEMENT RESTORATION
- CURB
- TREE REMOVAL

CONTINUED ON SHEET 15

STRASBURG PIKE TRAIL

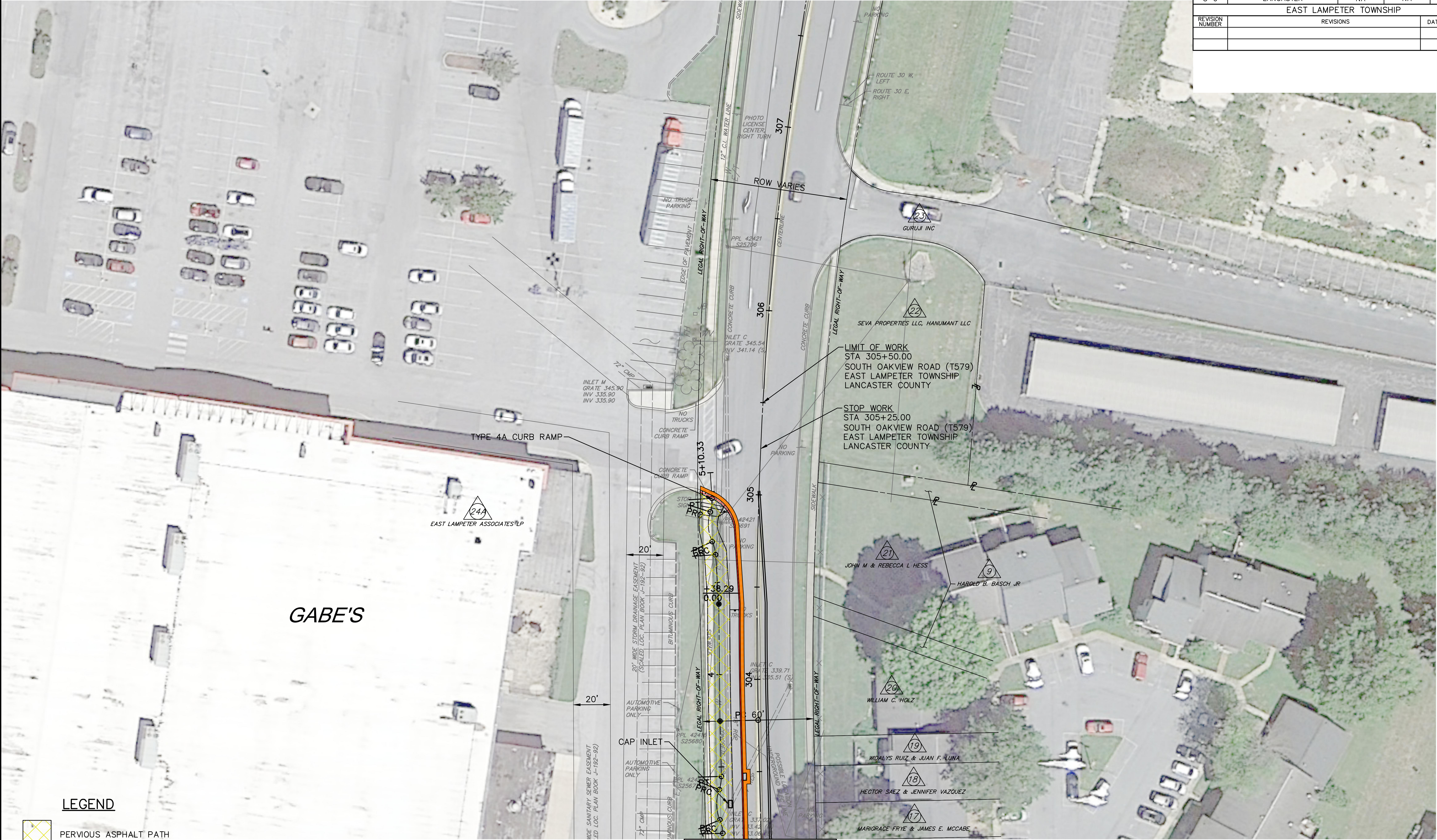


ROADWAY IMPROVEMENT PLAN

SEE SHEET 22 FOR PROFILE

Q:\PA-CAMP-MC\Projects\EASTLAM1\311754-01-001 - Strasburg Pike Trail\dwg\Exhibits\CEE\754RDY01 - CEE.dwg, 12/13/2023 4:00 PM

DISTRICT	COUNTY	ROUTE	SECTION	SHEET
8-0	LANCASTER	NA	NA	17 OF 22
EAST LAMPETER TOWNSHIP				
REVISION NUMBER	REVISIONS			DATE BY

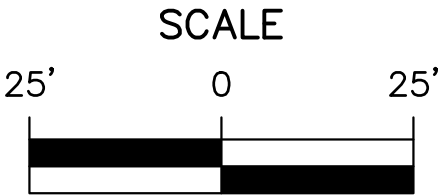


LEGEND

- PERVIOUS ASPHALT PATH
- PAVEMENT RESTORATION
- CURB
- TREE REMOVAL
- WESTERN GATE PROJECT (MPMS NO. 110502)

STRASBURG PIKE TRAIL

CONTINUED ON SHEET 16



SEE SHEET 22 FOR PROFILE

ROADWAY
IMPROVEMENT PLAN

